

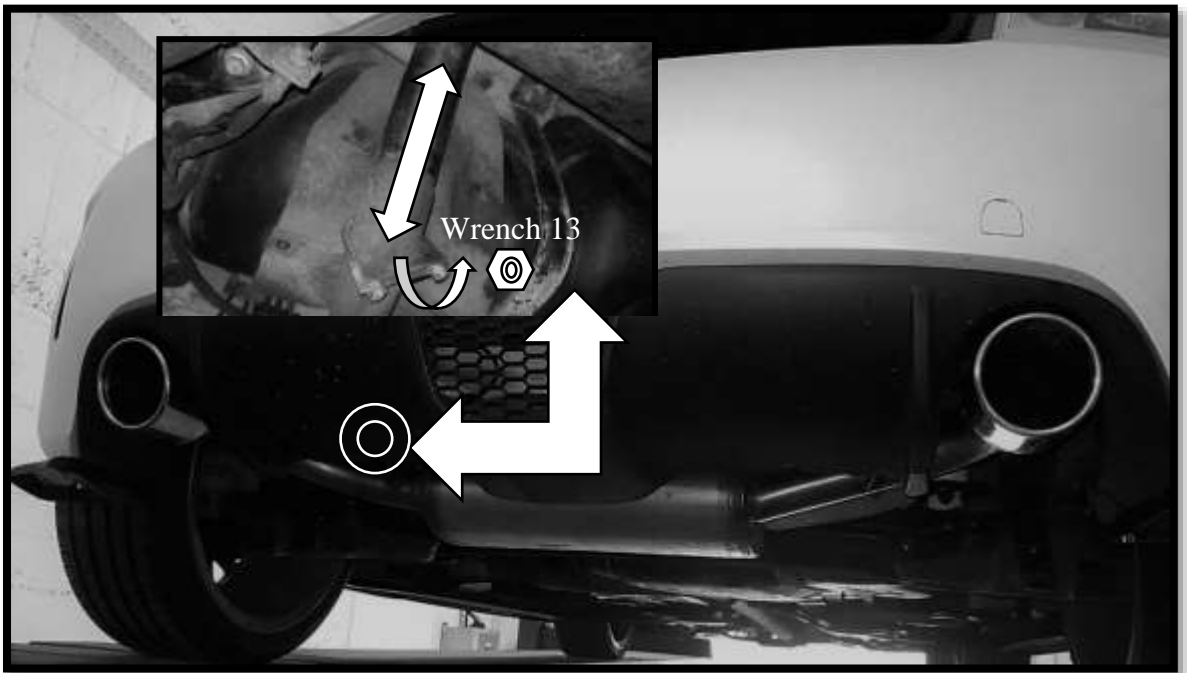
INSTRUKCJA MONTAŻU  
FITTING INSTRUCTION  
ANBAUANLEITUNG  
INSTRUCTIONS DE POSE  
INSTRUCCIONES SE MONTAJE

## FIAT 500 ABARTH ELECTRIC VALVE EXHAUST SYSTEM

**e3\*70/157\*2007/34\*0043\*02**



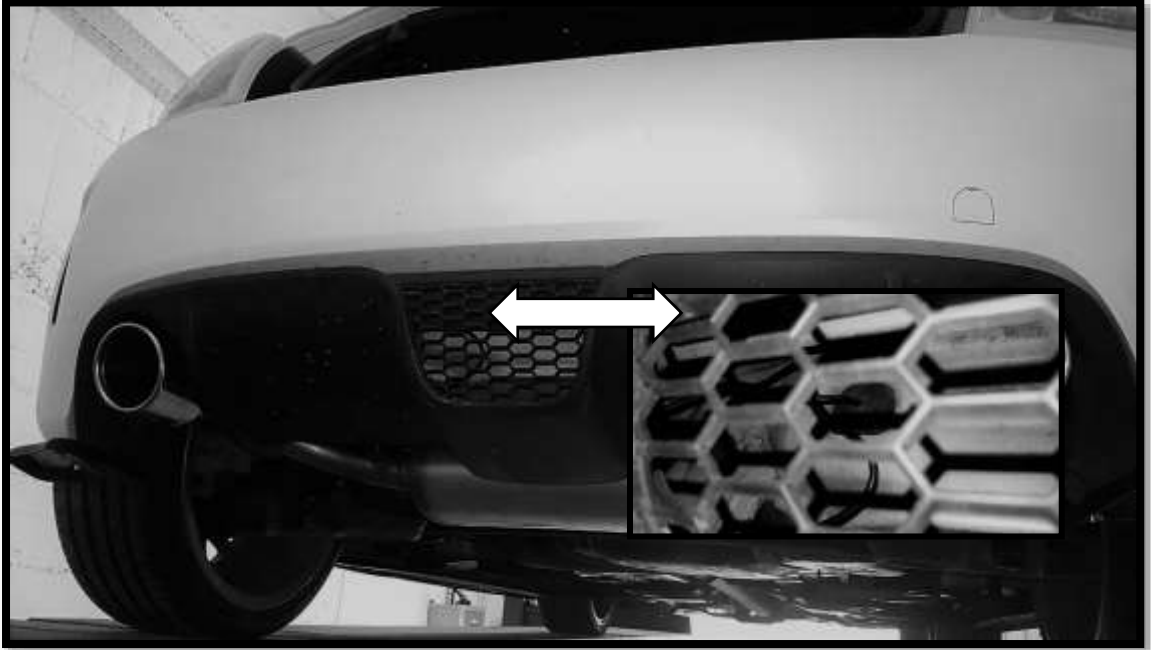
**1. Remove the factory fitted exhaust**



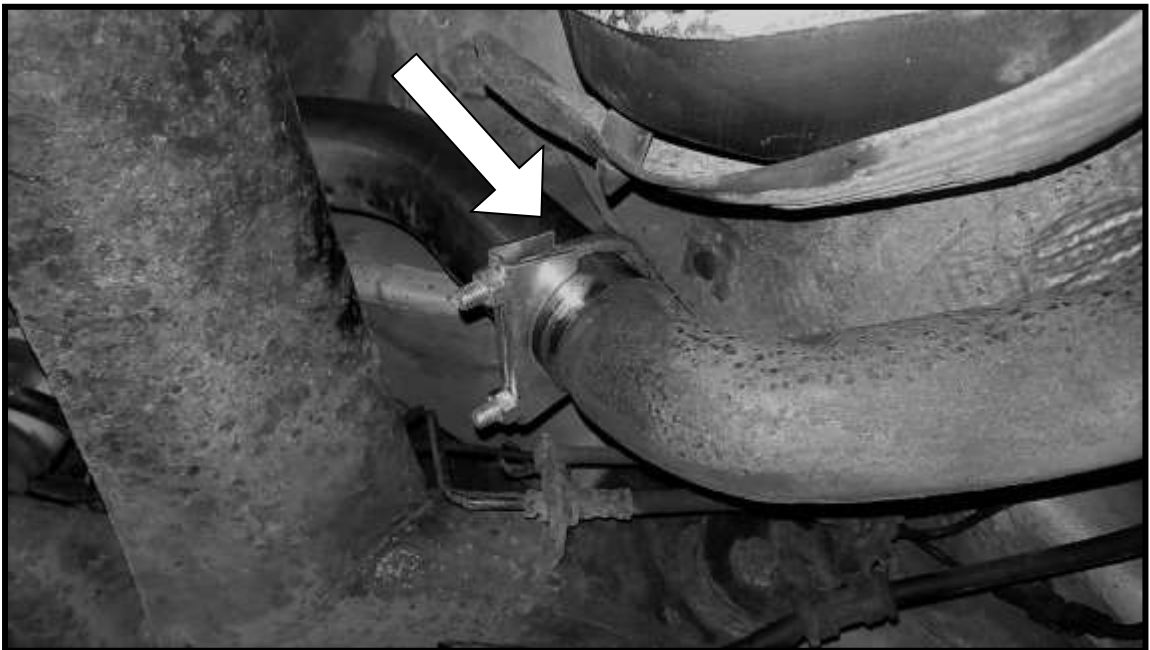
**2. Place the central unit in the boot of the car**



3. **Locate the factory hole at the back behind the bumper. Take the rubber cap off and put the exhaust wiring from the inside of the boot to the outside.**

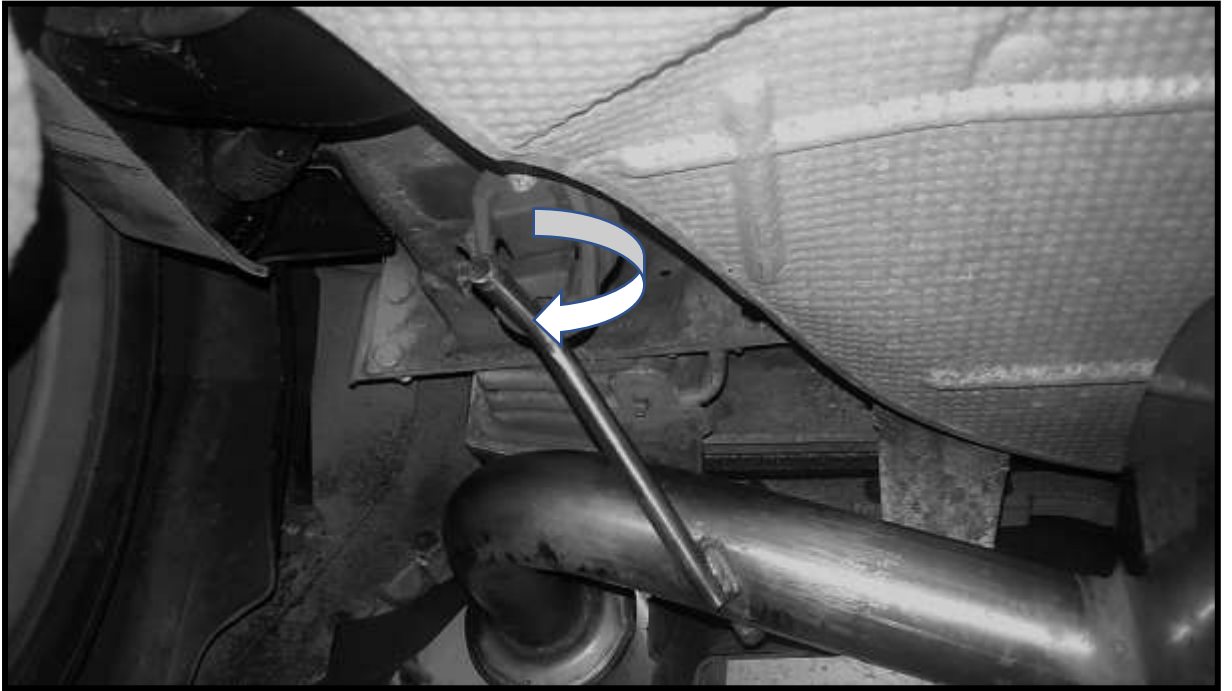


4. **Mount the Ulter-Sport Exhaust**  
**Slide the Ulter exhaust pipe over the exhaust pipe (do not tighten the clamp yet).**



5. Place the exhaust brackets on the rubber hangers

6.



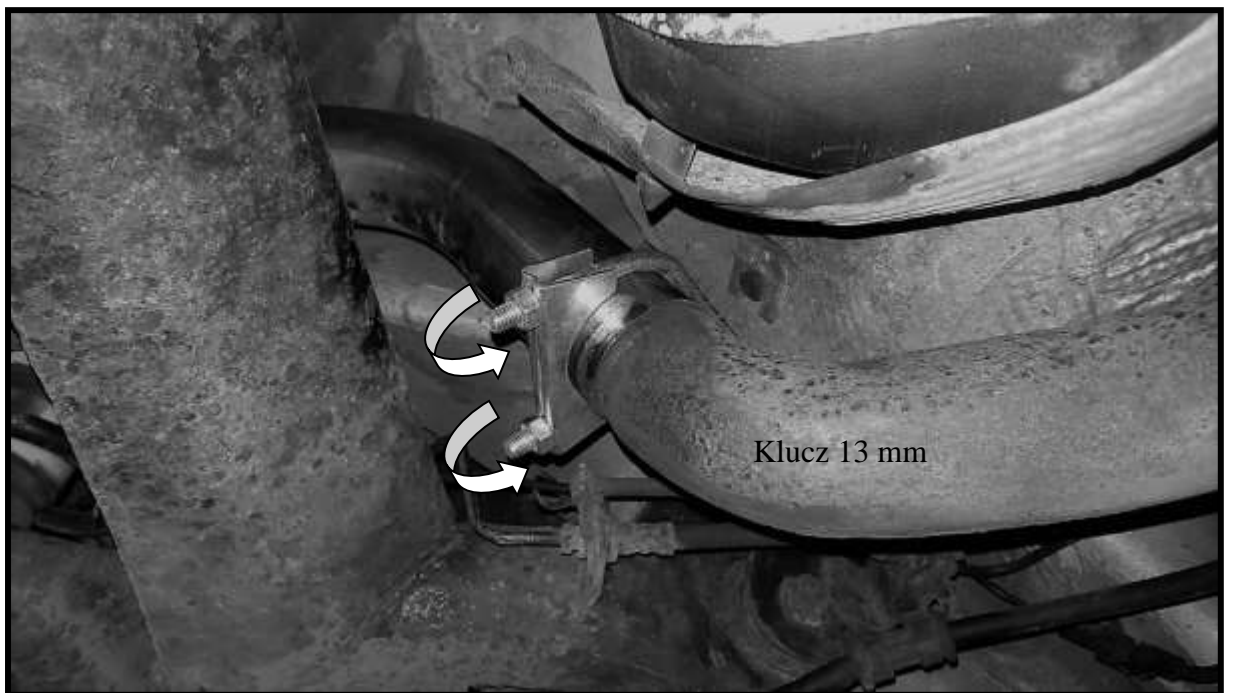
7. Connect the plug to the electric valve and secure the wires with the strap so they do not touch the exhaust pipe.



8. Align the exhaust tailpipes so that they are evenly placed in the bumper cut outs.



9. Once the exhaust is aligned, tighten the connection with the clamp.





10. Connect the power plug to the 12V socket inside the car

11. Test the RC operation – pressing the button should trigger the electric valve.



**RC buttons explained (from the bottom)**

- X – MAX Opened**
- X – MAX Closed**
- O – Open gradually**
- O – Close gradually**