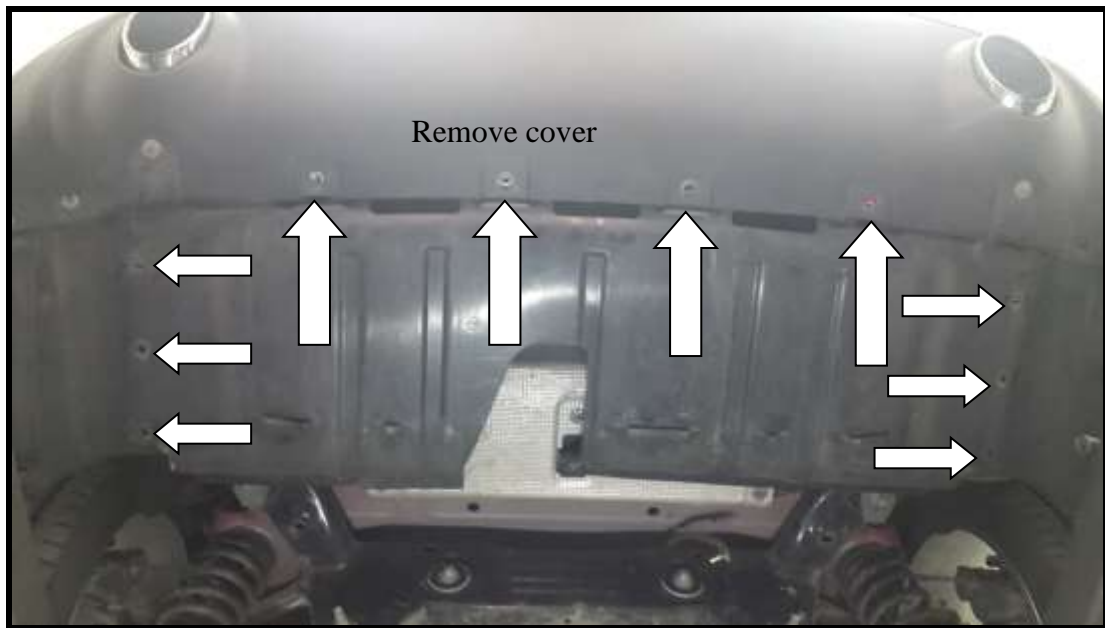


INSTRUKCJA MONTAŻU  
FITTING INSTRUCTION  
ANBAUANLEITUNG  
INSTRUCTIONS DE POSE  
INSTRUCCIONES SE MONTAJE

ALFA ROMEO GIULIA 2.0  
ELECTRIC VALVE EXHAUST SYSTEM -100-317Z/BK P  
E24 59 R -A02 0013\*00



**1. Unscrew the plastic muffler protector cover**



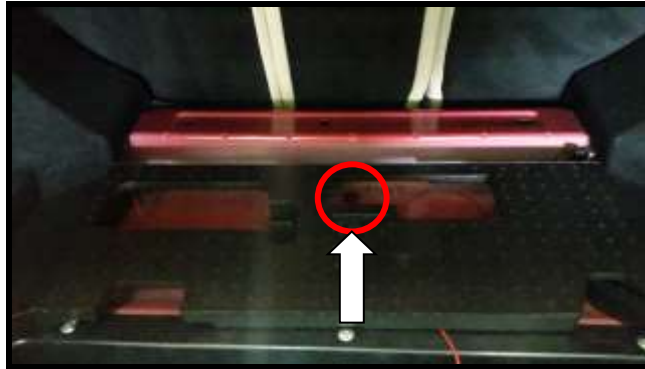
**2. Disconnect and take off the original rear exhaust**



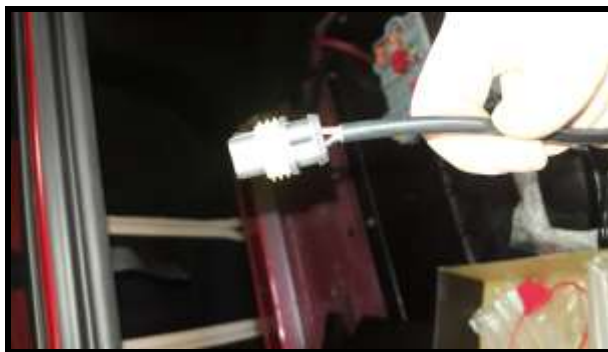
**3. Connect the electric valve**  
**Place the central unit in the trunk of the car**



4. Remove the floor mat from the boot, locate and remove the rubber cap.



5. Take the rubber cap off and put the wires through at the outside length of approx. 60cm.



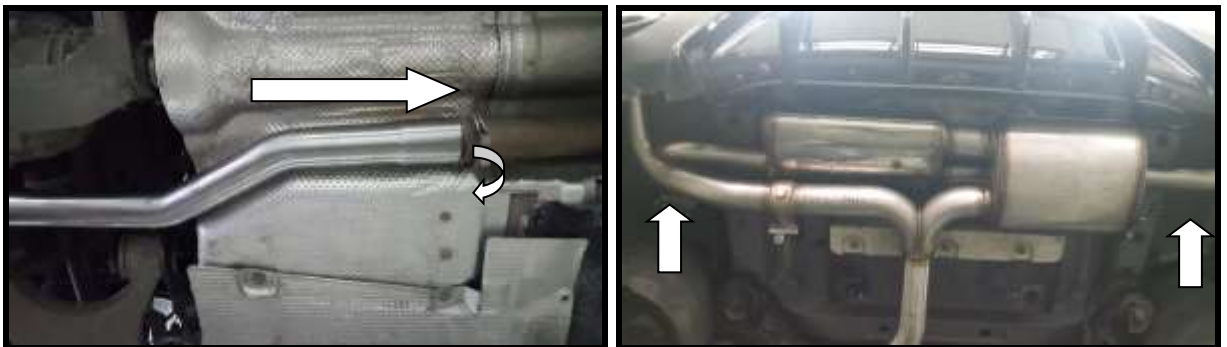
6. Connect the other end of the cable to the 12V socket (inside the vehicle)



7. Cut the left and right plastic cover according as shown in the drawing



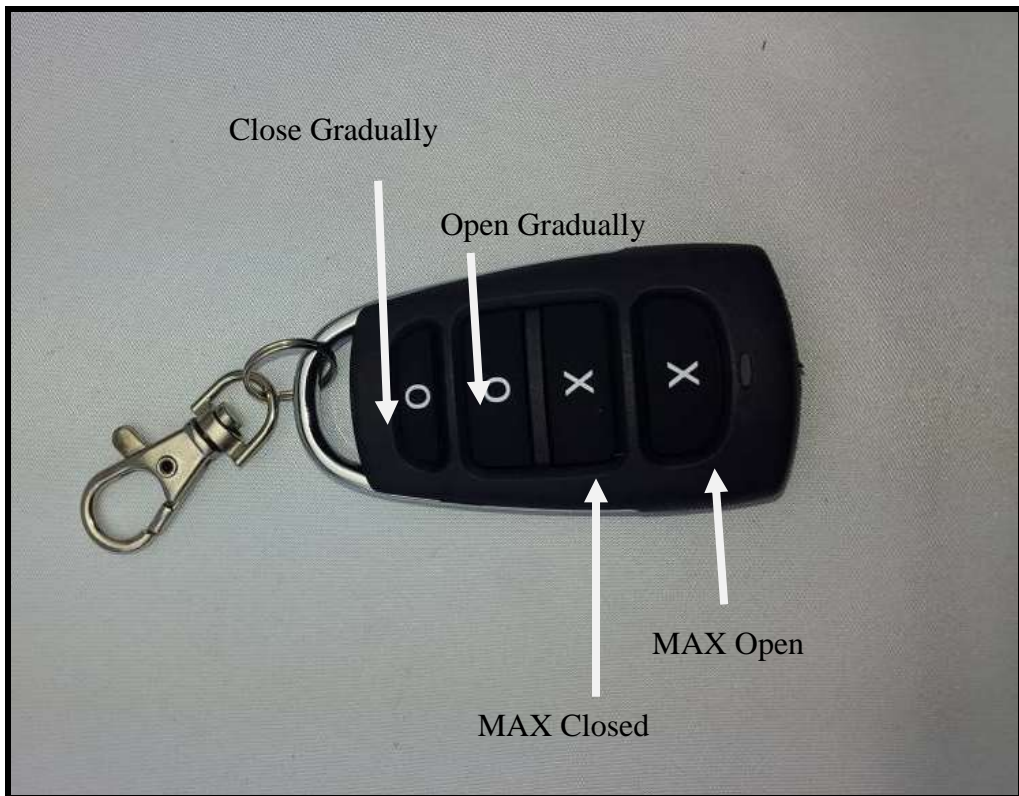
8. Mount the Ulter exhaust using the existing rubbers. Tighten the connection with the clamp.



9. Connect the plug to the electric valve socket



10. Test the RC operation – pressing the button should trigger the electric valve.



RC buttons explained (from the bottom)

X – MAX Opened

X – MAX Closed

O – Open gradually

O – Close gradually

11. Once you test the RC and all is working correctly, mount the plastic muffler protector cover back on .

