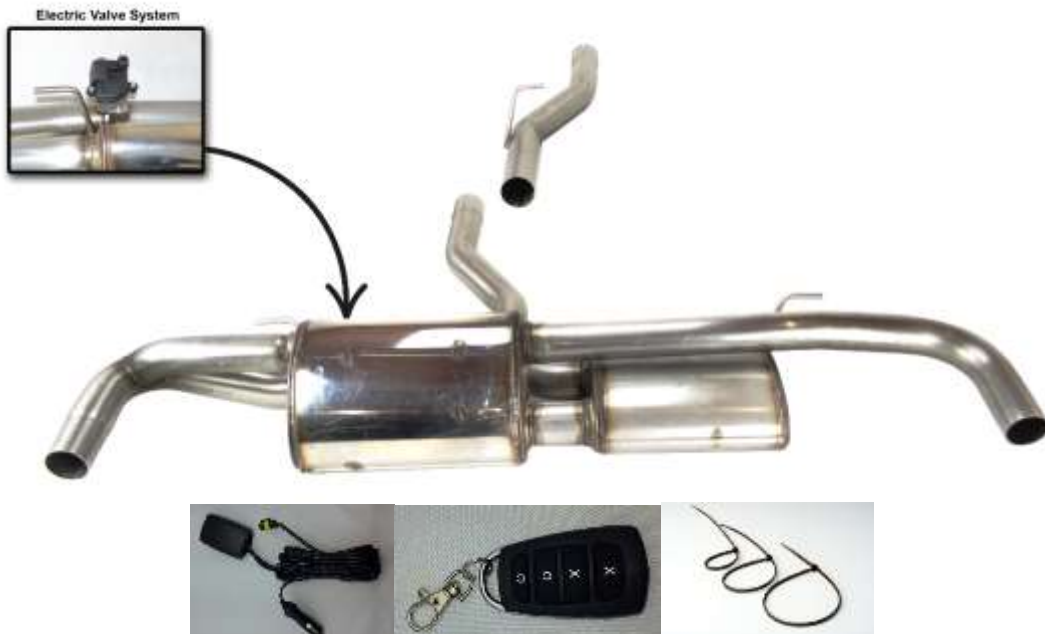


INSTRUKCJA MONTAŻU
FITTING INSTRUCTION
ANBAUANLEITUNG
INSTRUCTIONS DE POSE
INSTRUCCIONES SE MONTAJE

ALFA ROMEO STELVIO 2.0
Electric Valve Exhaust System -100-316Z/BK
E24 59 R -A02 0013*00



1. Unscrew the plastic muffler protector cover



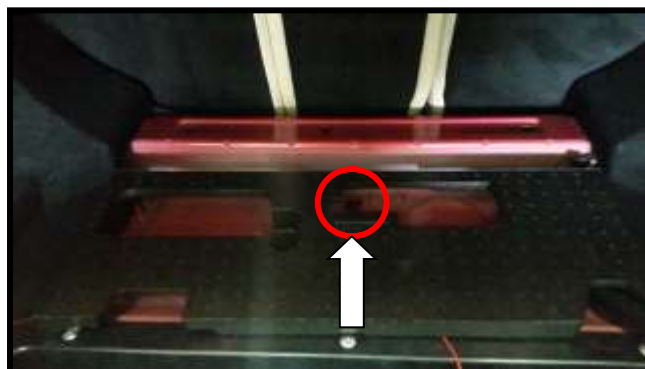
2. Disconnect and take off the original rear exhaust



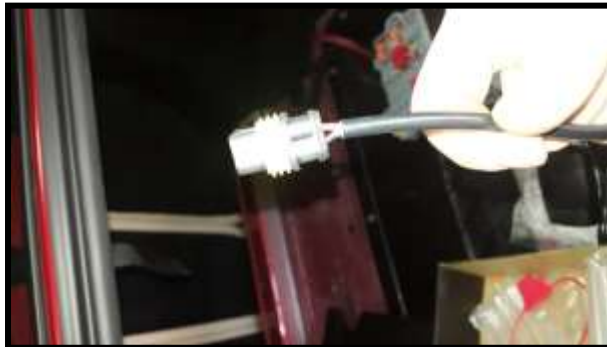
3. Connect the electric valve
Place the central unit in the trunk of the car



4. Take the rubber mat from the trunk and locate the service hole..



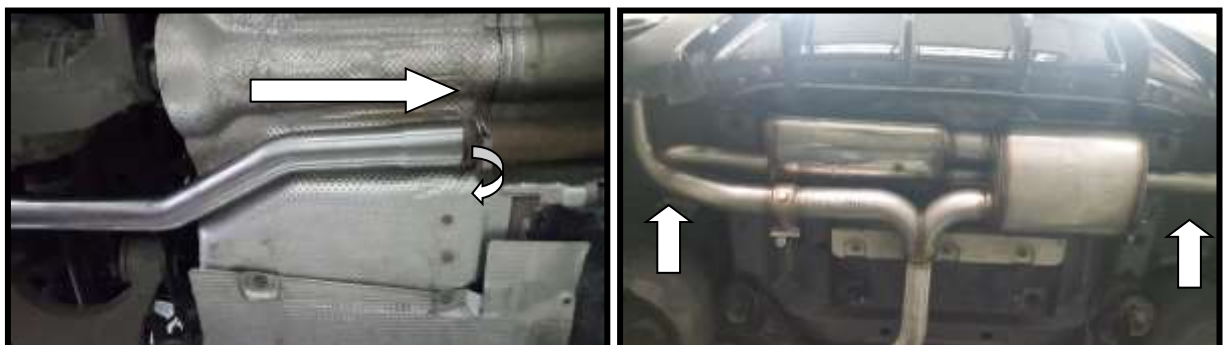
5. Take the rubber cap off and put the wires through at the outside length of approx. 60cm



6. Connect the other end of the cable to the 12V socket (inside the vehicle)



7. Mount the Ulter exhaust using the existing rubbers. Tighten the connection with the clamp.



8. Connect the plug to the electric valve socket.



9. Test the RC operation – pressing the button should trigger the electric valve.



RC buttons explained (from the bottom)

X – MAX Opened

X – MAX Closed

O – Open gradually

O – Close gradually

10. Once you test the RC and all is working correctly, mount the plastic muffler protector cover back on .

