

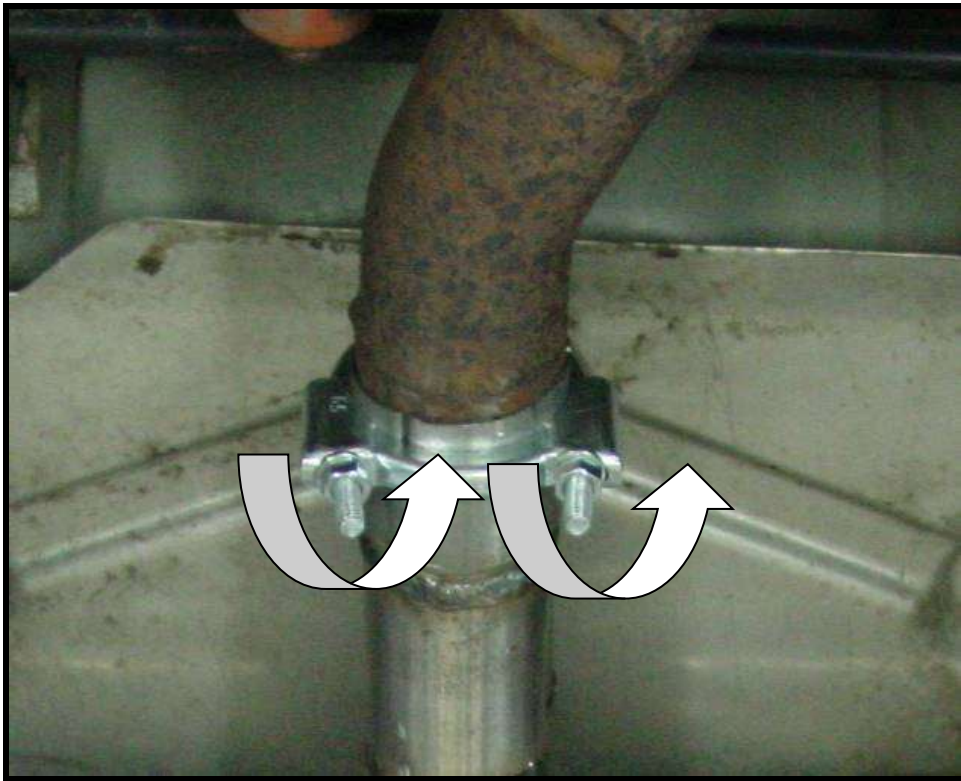
INSTRUKCJA MONTAŻU
FITTING INSTRUCTION
ANBAUANLEITUNG
INSTRUCTIONS DE POSE
INSTRUCCIONES SE MONTAJE

ALFA ROMEO GIULIETTA ELECTRIC VALVE EXHAUST
100-312Z/101RS & 100-313Z/101RS

e3*70/157*2007/34*0046*00



1. Make sure that the exhaust system is cold before proceeding.
2. You will need no. 13 wrench and a tool to disconnect the rubber hangers
3. Disconnect and take off the original rear exhaust



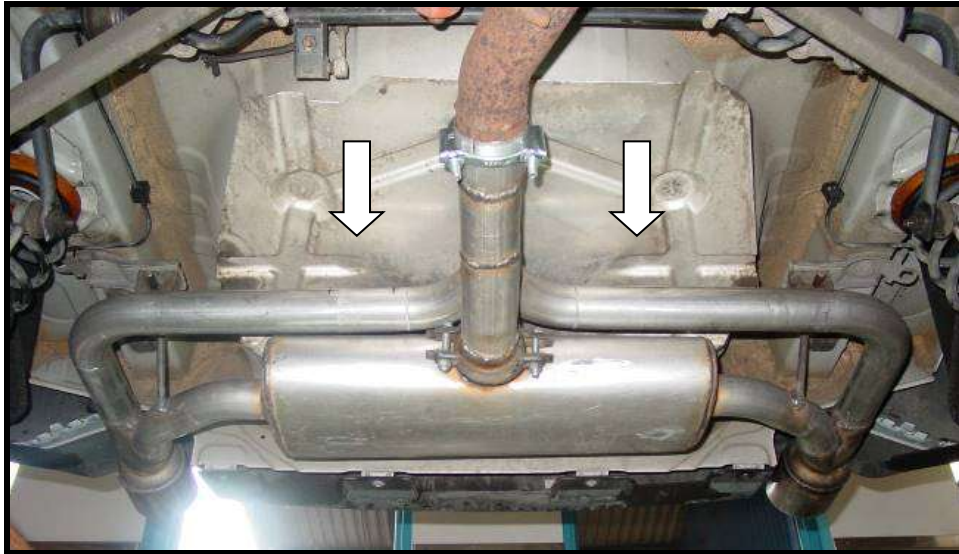
4. Place the central unit in the trunk of the car



5. Connect the power cable to the 12V socket



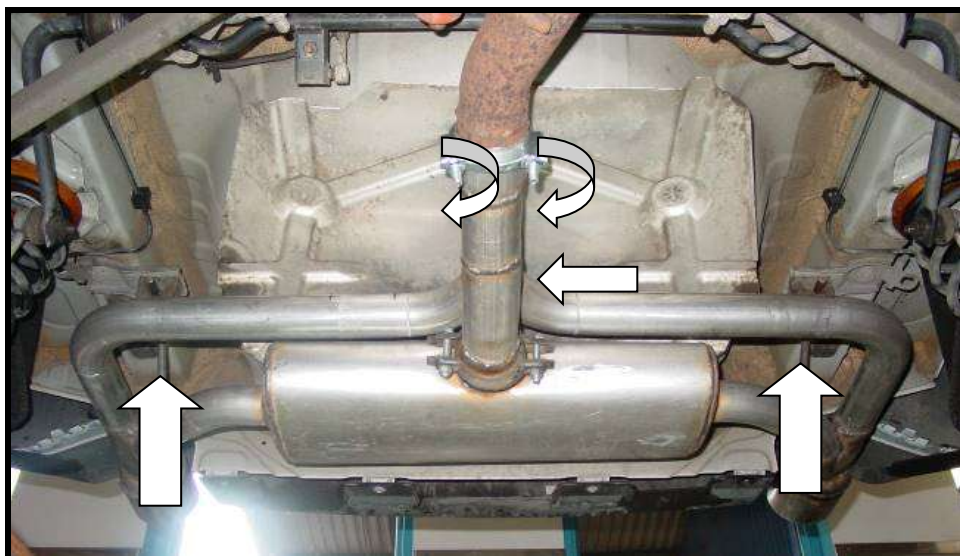
6. Unscrew and reamove the thermal shield



**7. Put the wires through outside at the length of approx. 80cm.
Put the heat shield back on.**



8. Mount the Ulter-Sport exhaust and connect the electric valve.



9. Align the tailpipes so that fit the bumper cut outs. Once this is done tighten the exhaust connection.



10. Test the RC operation – pressing the button should trigger the electric valve.



RC buttons explained (from the bottom)

- X – MAX Opened**
- X – MAX Closed**
- O – Open gradually**
- O – Close gradually**